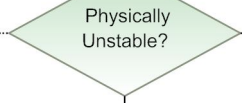


INTAKE PROCESS

COMMUNITY

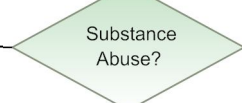
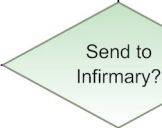
JAIL



Note: If the detainee is in need of immediate emergency treatment (bleeding, broken bones, etc.) the jail will not accept him/her. This decision point is an ad hoc pre-screening.

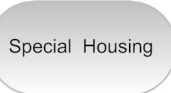
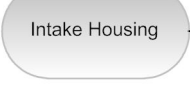
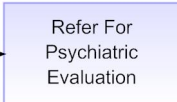
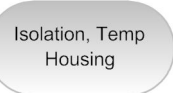
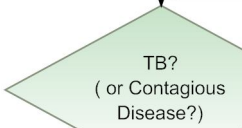
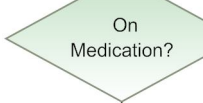


Note: After booking, **medical screening starts**. This process will determine the housing of the detainee. (The steps listed below do not necessarily need to be in the displayed order.)



Note: The nurse has several options:
1) Call a physician to decide whether to continue, change or stop medication.
2) Refer to a standing order which might specify replacing certain medication with medication on the jail formulary.

Note: At this decision point, the nurse is assessing the risk of drug/alcohol withdrawal.



key

- start/end
- decision
- process
- alternate process
- note